

HYMN TO THE FALLEN

B \flat CLARINET 3

(B \flat Bass Clarinet, E \flat Clarinet, opt.)

JOHN WILLIAMS

Reverently

6 7 B \flat Clarinet

1 *p*

10 *pp*

14 R-L

18 *mf*

22 *dim.* *niente*

to Bass Cl. 3

28 Move a little (poco rubato) More expansively

3 6 2

Tempo I Bass Clarinet

43 to E \flat Cl. (opt.) 7

40 *mf*

B \flat CLARINET 3

50 *p* \triangleleft *mp*

B \flat Clarinet

54 \triangleleft *mf*

58

62 *Broadly and expansively*

3

f

68

72

76 *dim.* \triangleleft *mp*

79 *Poco rubato*
to B \flat Cl. 3

B \flat Clarinet

mf poco rit. \triangleleft *poco*

83 *Tempo I*

6 2

p \triangleleft

rit. *a tempo*

8

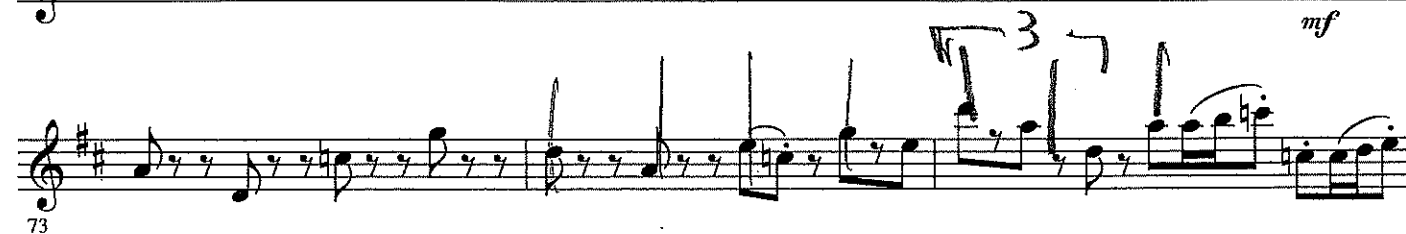
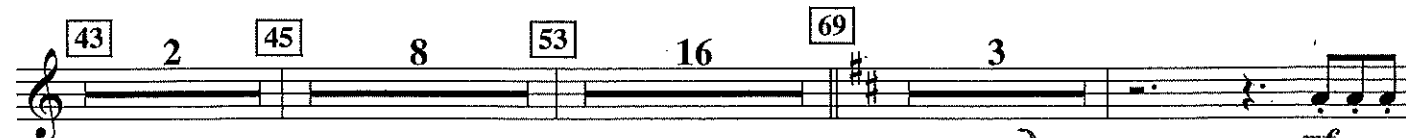
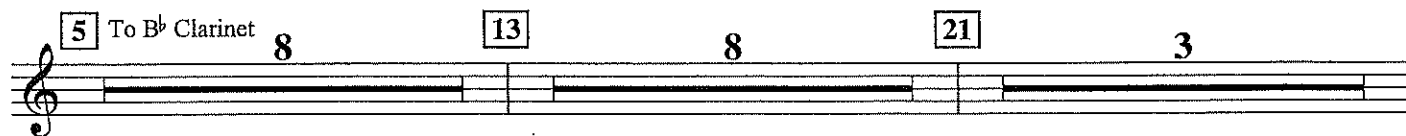
000868

MIDWAY MARCH

EVANSVILLE PHILHARMONIC ORCHESTRA
530 MAIN STREET
EVANSVILLE, IN 47708B \flat CLARINET 3B \flat Bass Clarinet

JOHN WILLIAMS

A la marcia

Bass Clarinet
bring out

B♭ CLARINET 3

Handwritten: 3 7

76

79

82

85 15

103

brilliante

ff

104

107

110

114

117

sub p

121

124

2

ffz

B \flat CLARINET 3

Handwritten: $\text{♩} = 60$

II. The Sorcerer's Stone

Misterioso

Soli E \flat Contrabass Clarinet

to B \flat Bass Clarinet

8

Opt. B \flat B. Cl. cue

B \flat Bass Clarinet

13

p

20

5

29

ff

mf

f

Soli

30

ff

pp sub.

37

p

41

Soli

pp

45

4

6

43

III. Nimbus 2000

Handwritten: $\text{♩} = 80$

Magico

14

B \flat Clarinet

f

19

to Bass Clarinet

8

16

27

Bass Clarinet
w/Bsn.

mf

f

B \flat CLARINET 3

30 *ff*

33 *f* [35]

36 *sfz*

40 [43] 7 *w/Bsn.*
mf

51 *f*

55 [55]

59

63 *sfz* [67] Forcefully
stacc. *f*

68 *sfz* *sfz* *sfz*

72 *sfz* [75] Brillante 13
p

5. 264

105

3

mf rit.

04490213

69 Slightly slower

B \flat CLARINET 3

Cl. 1 $\text{to B}\flat$ Cl. 19 B \flat Cl. 3

90 mf

94

98 f

101

102

105

107 4

117 f

121

125 mf 2

131 f 3 2

134 $\text{to E}\flat$ Cl. 2

144 Victoriously

194

LOVE THEME FROM SUPERMAN

B \flat BASS CLARINET

JOHN WILLIAMS

Andante ($\text{♩} = 80$)

4 5 8 13 (Fl, Ob.) 6 4

25

mp

33 4

mp

45 3

42

mf

50 53 5

mf

61

60

ff

69

66

73

72

cresc.

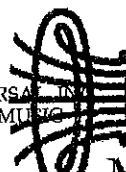
ff

82 6

77

rit. a tempo

molto rit. e cresc. < sff a tempo > p



RAIDERS MARCH

(From the Paramount Motion Picture RAIDERS OF THE LOST ARK)

B♭ CLARINET 3
Bass Clarinet

JOHN WILLIAMS

Vare *5th measure*
Alla Marcia

13 Clarinet

12 *mf* *sfz*

16 *sfz* *sfz*

20 *mf* *ff*

21 **8** **29** **7**

37 *mf* *ff* *mf*

42 *f*

43

46 *f*

52 *ff*

53

57

61 *ff*

65

B♭ Clarinet 3

69 *Meno Mosso* **8** **77** **5** **85** To Bass Cl.

107 *Tempo Primo* Bass Cl. *poco rall.* *mf* *sfz*

11 **97** **9**

108 *sfz* *sim.*

112 *mf*

116

121 To Clar. **6** Clar. *f*

131 *f*

129

133 *ff*

139

138

143

148 *f* *ff*

9

Theme from JURASSIC PARK

From the Universal Motion Picture JURASSIC PARK

B \flat BASS CLARINET

JOHN WILLIAMS

Andante

2

2

8 Reverentially

rit. p

10 mp

15 mf legato tongue mf cresc.

21 23

20 ff dim. mf

26 3

f sim.

33 cresc.

37 3 43 Meno 3

rall. poco rall.

B \flat BASS CLARINET

Alla Marcia Maestoso

49



57



62



marc.



79



87

Moving ahead slightly



Very forcefully



9

Suite from JAWS

From the Universal Picture JAWS

B \flat BASS CLARINET

JOHN WILLIAMS

The Shark Theme

Menacingly

8

12 **Deciso**

accel. poco a poco

mf

14

16

3

ff

sf

sf

sf

22

f marc.

27

30

cresc.

ff

mf

31

sf

39

f

45

molto marc.

47

51

4

Copyright © 1975 USI B MUSIC PUBLISHING

Copyright Renewed

All Rights Controlled and Administered by SONGS OF UNIVERSAL, INC.

All Rights Reserved Used by Permission

Evansville Philharmonic Orchestra

04490413

Suite from Jaws - 1

B \flat BASS CLARINET

55 *p* *mp*

62 *mf* *f*

67 *ff* *fff molto rall.* *sf* *ffz*

rit.

Out To Sea
and
The Shark Cage Fugue

JOHN WILLIAMS

Jauntily

3

5 "Out To Sea"

8

13

17 5 22 10 2 35 (Cls.) 48 Risoluto "The Shark Cage Fugue"

16

56

61

62

65

70

69

mf *f*

mp *mf* *mp*

Music From
LINCOLN

9

B \flat CLARINET 3
B \flat Bass Clarinet

JOHN WILLIAMS

1. The People's House

"The People's House"
Andante (Freely)

Moving along
(♩ = approx. 80)

11 Broadly

16 B \flat Bass Clarinet

20

23

27 "The American Process"
Faster (♩ = 92)

30

35 Forcefully

37

Opt. Cut to m. 64

"The Blue and Grey"

46 (♩ = 66-69)

54 Move Ahead a Little

62

64 "With Malice Toward None"
(♩ = 72-76)

82

89

94 (♩ = 72-76)

100

102 Freely

Cadenza (♩ = 66)

rit.

poco rit.

rall.

rit.

rall.

B \flat BASS CLARINET

II. Princess Leia's Theme

JOHN WILLIAMS

Andante 4 5 (Hn. Solo) 10 15 Un Poco Più Mosso (Ob.) 3 rall.

19 (Fl.) 15 34 A Little Broader (Vins.) 4 a tempo mp no rush 44 poco rall. e cresc. a tempo f Con Moto 2 53 56 molto rall. e cresc. sffz a tempo rall.

Ltr stringendo
sve down

III. The Imperial March (Darth Vader's Theme)

JOHN WILLIAMS

Tacet

IV. Yoda's Theme

JOHN WILLIAMS

Tacet

Princess Leia's Theme

From the Lucasfilm Ltd. Production - A Twentieth Century Fox Release STAR WARS
© 1977 WARNER-TAMERLANE PUBLISHING CORP. and BANTHA MUSIC
All Rights Administered by WARNER-TAMERLANE PUBLISHING CORP.
All Rights Reserved Used by Permission

The Imperial March (Darth Vader's Theme) • Yoda's Theme

From the Lucasfilm Ltd. Production - A Twentieth Century Fox Release THE EMPIRE STRIKES BACK
© 1980 WARNER-TAMERLANE PUBLISHING CORP. and BANTHA MUSIC
All Rights Administered by WARNER-TAMERLANE PUBLISHING CORP.
All Rights Reserved Used by Permission

From the LUCASFILM LTD. Production STAR WARS: EPISODE II-ATTACK OF THE CLONES

ACROSS THE STARS

(Love Theme from Star Wars: Episode II)

EVANSVILLE PHILHARMONIC ORCHESTRA
530 MAIN STREET
EVANSVILLE, IN 47708

B \flat CLARINET 3
(Clarinet in A)

JOHN WILLIAMS

Cantabile

4 5 16 22 (Cl. 2) 4

26 B \flat Clarinet 8 35 8 43 **Appassionato** 3

mf *mf legato*

47 *slow* to A Clarinet 2 52 6

58 Clarinet in A *mf* 60 (J. = J) w/Vla. *f*

61 64 67

B \flat CLARINET 3

71 *mf* *cresc.*

75 *mf*

79

83 to B \flat Clarinet 84 5 B \flat Clarinet 92 *mf* *rall. e cresc.* *ff cantabile a tempo*

93

101 *mf*

104 109 4 *mf*

113 9 3 4 *rit.*

STAR WARS

Suite for Orchestra

B♭ BASS CLARINET

I. Main Title

JOHN WILLIAMS

Maestoso L'istesso (♩ = ♩)

sffz *poco rall.* *a tempo* *sffz*

12 *f marc.* 20 *mf* 23 29 34 *marc.* 38 *poco rall.* *a tempo* 40 44 49

From the Lucasfilm Ltd. Production - A Twentieth Century Fox Release STAR WARS
© 1977 WARNER-TAMERLANE PUBLISHING CORP. and BANTHA MUSIC
All Rights Administered by WARNER-TAMERLANE PUBLISHING CORP.
All Rights Reserved Used by Permission

PROPERTY OF
BREVARD MUSIC CENTER
LIBRARY

Bb Bass Clarinet

56 6

mf

dim. poco a poco

68 Poco Meno 5

Poco Più Mosso e Più Agitato

4

82

85 With Great Force 3

88 Presto 3

molto rall. e cresc. fff

92

97 98 Poco Meno (A little more deliberate) f

A La Marcia 6

100

108 f 3

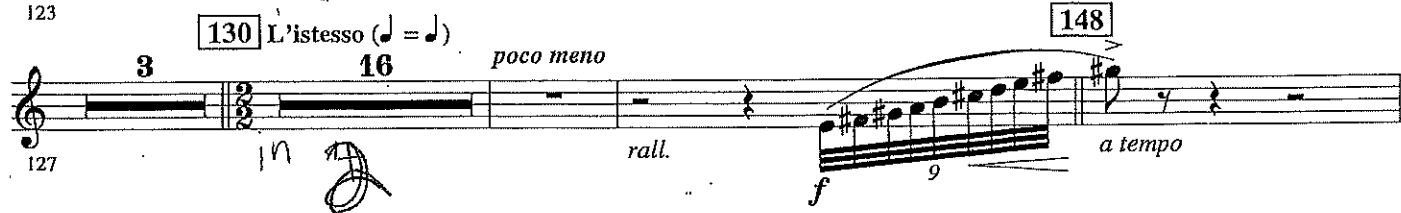
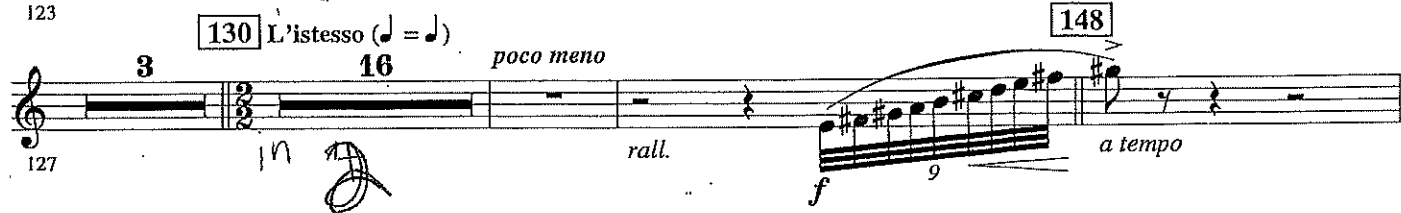
110 4

115 ff 3

118 ff 3

Bb Bass Clarinet

123 

127  **130** L'istesso (♩ = ♩) *poco meno* **148**  *rall.* *a tempo*

149 

151  **152**

155 

159  **160** Un Poco Meno *p*

165  *Brillante* *mf* *ff* *(A Tempo) pull back* *f marc.*

170 

175 

179 Meno Mosso *rall.* *Maestoso* *f marc.* *ff*

186  *rall. e cresc.* *sffz*